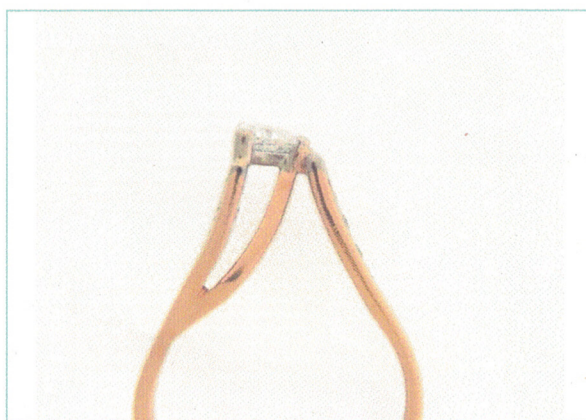
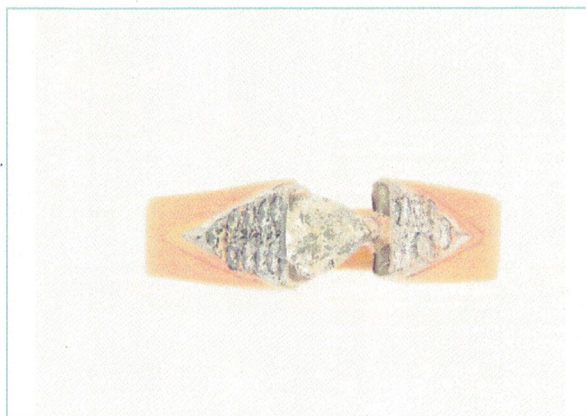


2491
140

ITEM SCHEDULE

Valuation 26013321: Item 1 of 1

Item:	Ladies diamond dress ring
Design:	Centre raised diamond in three pillar claw and collet white gold setting on top of three bar support style undersetting, diamond pave set tapered setting with straight edge white gold overlaid end shoulders, flat and tapered shank
Manufacture:	hand made
Metal:	18ct yellow & white gold
Stamps:	750
Finishing:	polished and rhodium plated
Setting height:	2.2 mm
Shank at reverse:	2.8 x 1.4 mm at base
NATURAL DIAMOND:	1, trilliant (modified brilliant) cut
Measuring:	4.0 x 3.85(D) mm
Total weight:	0.20 ct
Colour grade:	H - I
Clarity grade:	SI1
NATURAL DIAMONDS:	10, round brilliant cut
Average size:	1.5 mm
Total weight:	0.15 ct
Colour range:	G - H
Clarity range:	SI
Cut:	good - fair
NATURAL DIAMONDS:	8, single (8/8) cut, 1.3 mm, TDW 0.08 ct, H - J colour, VS - SI clarity, good - fair cut
Item notes:	
Durability:	Good
Condition:	Good
Weight:	4.56 grams

**EQUIVALENT REPLACEMENT COST:** \$6,350.00