

3585-01

ITEM SCHEDULE

Valuation 2510438: Item 5 of 6

Item: Ladies emerald and diamond set oval cluster ring

Design: Centre raised applied eight claw emerald setting, surrounded by diamonds in split double and triple claw set settings, pillar wire basket style undersetting, knife edge shoulders, flat and reverse tapered shank

Style: modern production

Manufacture: cast and assembled

Metal: 18ct white gold

Stamps: 750 KC

Finishing: polished & rhodium plated

Setting height: 9.8 mm

Shank at reverse: 2.4 x 1.2 mm at base

Finger size: N

NATURAL DIAMONDS: 8, round brilliant cut

Size range: 2.95 - 2.74 mm

Total weight: 0.72 ct

Colour range: H - K

Clarity range: SI-I1

Cut: fair

GEM type: EMERALD

Number and Cut: 1, oval mixed cut

Measuring: 6.67 x 5.29 mm x 4.24 mm

Total weight: 0.96 ct

Colour: slightly bluish Green

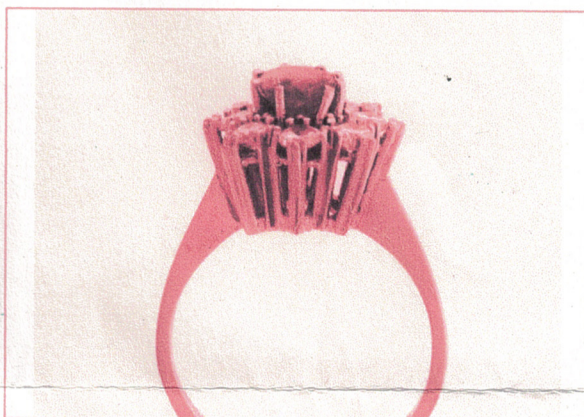
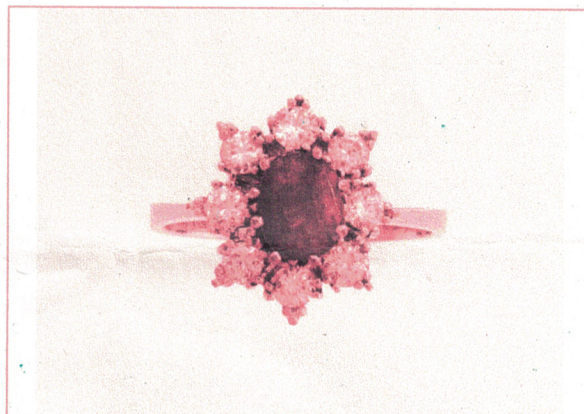
Overall grade: low commercial

Item notes:

Durability: Fair

Condition: Good

Weight: 5.17 grams



EQUIVALENT REPLACEMENT COST: \$6,155.00