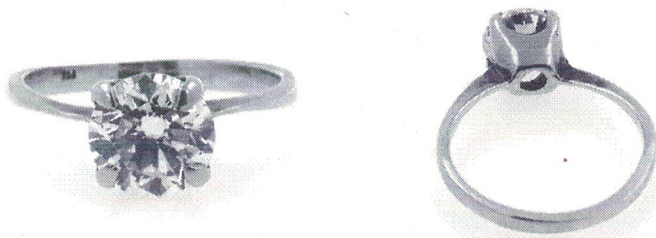


Gems or Jewellery Quality Report

Ref: 0040 25E269-1/1



RING: modern diamond solitaire, 2.68 grams

RING MOUNT... Assembled handmade in approx. 15ct yellow gold, tested by XRF, stamped "750".

A 7.6 mm tall tapered cushion shaped claw collet setting, on a 2.3 mm reverse tapered rounded shank with knife edge shoulders, with an inside diameter of 17.1 mm.

The shank is worn and slightly bent at the shoulders, tarnishing around setting, otherwise in good condition

NATURAL DIAMOND... One is 4 claw set, round brilliant cut, approx. 7.55 - 7.6 x 4.6 mm in size, estimated 1.62 carats in weight, with features and quality assessed in the setting as:

Excellent make

J-K colour

VVS1 to VS1 clarity*

Faint blue fluorescence

Medium bruted girdle

Minor abrasions and tiny nicks on the facet edges.

* Clarity features may be hidden by the claws, valued based on VVS2.

Note : The actual weight and quality grades may differ from the estimates stated above. Greater accuracy would require analysis of the diamond out of its setting.

Diamond Grading Scales in descending order of quality/value

Make : Excellent - Very Good ---- Good ----- Fair ----- Poor

Colour : D--E--F -- G -- H -- I -- J -- K --- L --- M --- N --- O .. Z

Clarity : IF - VVS1 - VVS2 - VS1 - VS2 -- SI1 -- SI2 - SI2/I1 - I1 -- I2 - I3

NZ \$1 = US \$0.60

This independent Quality Report provides a non-destructive analysis of the nature and quality of this item as accurately as possible, given the limitations imposed by such things as gems being set, using current standard gemmological methods and jewellery industry description standards. The Report may be updated to a full insurance report by emailing GemLab info@gemlab.co.nz with a sales receipt and quoting the GL reference number above.

Declaration: GemLab Jewellery Valuers are totally independent and as such have no financial interest in the subject property or bias with respect to any party. Our fees are based on an hourly rate and are not contingent on any outcome.

Sophia Choi

GIA Gemologist

Gemlab. 40-42 Constellation Drive, Rosedale, Auckland 0632

Gemmologist